

October 13, 2022

Dear Neighbour:

Spill Response Base Construction Update

As you may recall from our March 2021 update letter, Western Canada Marine Response (WCMRC) is constructing a new on-water spill response base in Vancouver Harbour. This base is part of a larger expansion planned to meet enhanced spill response requirements associated with the Trans Mountain Expansion Project. This larger expansion will double WCMRC's capacity and cut mandated response times in half in South Coast waters.

The proposed 24-hour facility will operate 7 days a week and consist of new docks to moor vessels, as well as an office to accommodate response crews. Response barges will act as a breakwater for rapid response vessels, skimmers and workboats.

We have received a project permit (Project Permit No.16-290; WCMRC Oil Spill Emergency Response Base) from the Vancouver Fraser Port Authority to build the response base and we wanted to update you on our upcoming land-based construction activities.

When will land-based construction start?

As you may be aware, we started marine-based construction in September 2020. We anticipated starting our land-based construction in March 2021. However, as a result of several delays we have only recently resumed construction and are anticipating a completion date of December 31, 2022.

Work will take place on weekdays between the hours of 7 a.m. and 5 p.m. WCMRC's permit from the port authority does allow for work from Monday to Saturday between the hours of 7 a.m. and 8 p.m. should that be required. No work will be carried out on Sundays or on statutory holidays.

What work will be taking place?

The following land-based construction activities will take place:

- Security gate installation
- Site preparation (concrete foundations, backfill, and drainage)
- Water and power supply installation
- Base lighting installation
- Paving
- Office installation

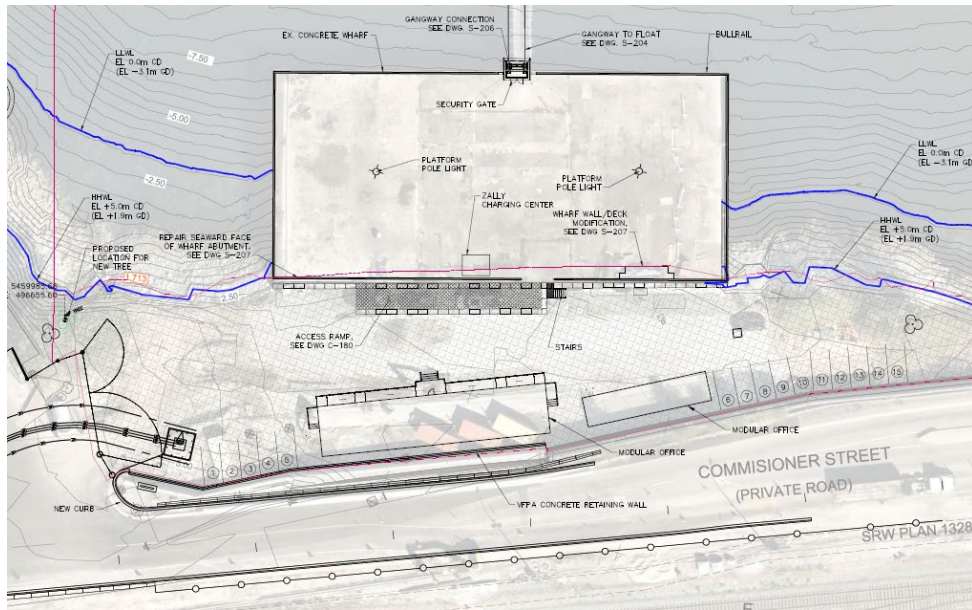
Where is this happening?

The proposed base is located at 2800 Commissioner Street, Vancouver. The location of our upcoming land-based work is shown on the map in red (overall base location shown in blue).



What will the new base look like?

A site layout plan is provided below for reference.



How will this impact me?

We do not expect neighbouring residences and businesses to be impacted by this work. We have taken a number of measures to mitigate dust and noise, including limiting construction activities to daytime hours, timing truck shipments to limit impact on the community and turning off vehicles and equipment when not in use.

You can also visit the project website for any updates:

wcmrc.com/news/new-spill-response-base-planned-vancouver-harbour/

Questions regarding the port authority's permitting process can be directed to their Community Feedback Line at

Community.feedback@portvancouver.com or 604-665-9004.

For questions about the port authority's Project and Environmental Review of the project, please contact the port authority at

PER@portvancouver.com or 604-665-9047.

If you have any feedback, questions or would like more information, please send them to comments@wcmrc.com or 778-991-0003.

We'll continue to keep you informed as this project moves forward.

Sincerely,

Michael Lowry
Senior Manager, Communications